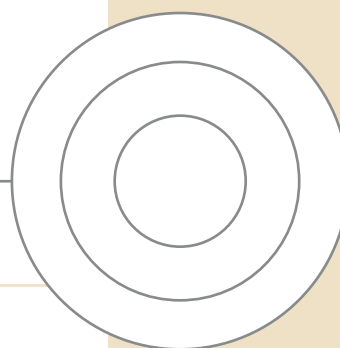


# Restorative



**CompCore™ AF Dual-Cure** Page 136-137

| Advanced Formula Composite Core Build-up Material

**CompCore™** 137

| Composite Core Build-up Material

**IntegraCem™** 138

| Dual-cure Resin Cement

**Bond Boost SE™** 138

| Universal Self-etching Primer & Bond Enhancer

**IntegraBond™** 138

| Universal Adhesive System

**NexTemp™** 139

| The Next Generation in Temporary Cement

**Premier® Implant Cement™** 139

| Secure Retention & Retrievability for Implant Retained Crowns

**IntegraPost™** 140-141

| Integrating Core Retainer

**Premier® Etch** 142

| 37% Phosphoric Acid Dentin/Enamel Etch Gel

**Porcelain Etchant** 142

| 9.6% Hydrofluoric Acid Gel

**38% Etchant MicroDose®** 142

| Fast Acting, Silica Free Dentin/Enamel Etchant

**Porcelain Silane** 142

| Advanced Silane Chemistry

**Sycamore Wood Wedges** 143

| The Original Anatomically Carved

**Cure-Thru®** 144-145

| Reflective Curing Wedges, Bands & Matrices

**Cure-Shield** 144

| Hand-held Visible Light Shield

**ACCOR®** 145

| Multi-sized Matrices for Core Build-up

**Pre-contoured Metal Bands** 145

**Stop Strips** 145

| Mylar Anterior Bands with Integrated Stopper

Restorative

### CompCore™ AF Dual-Cure

Fluoride-Releasing, Automix Composite Core Build-up Material

Advanced formula dual-cure core build-up material provides exceptional radiopacity and performance.

Higher compressive strength,<sup>1,2</sup> less shrinkage<sup>1,2</sup> and low solubility<sup>1</sup> CompCore AF utilizes exclusive Hyperbranched Technology™ and nano-fillers for superior mechanical properties and long-term clinical success.

CompCore AF has fluoride release and is surprisingly easy to dispense from cartridge and SyringeMix™.

CompCore AF Stack will stay put even in difficult maxillary core build-ups, yet flows under pressure for good adaptation. Stack viscosity is available in 50g cartridge, SyringeMix and CompCore AF Twist syringes (auto-cure).

CompCore AF SyringeMix Flow (original) flows easily into crevices and tight areas for intimate adaptation.

Choose Stack or Flow to satisfy every clinical challenge.



*"Pearls For Your Practice"*  
Dental Economics - April 2005



**SyringeMix STACK: Dual-Cure/Automix**

- 3001512 Shade White
  - 3001513 Shade A3
  - 3001514 Shade Blue
- Contains two 9g automix syringes, 15 mix-tips, 15 standard & 10 extra-fine intraoral tips

**SyringeMix FLOW: Dual-Cure/Automix**

- 3001462 Shade White
  - 3001463 Shade A3
- Contains two 9g automix syringes, 15 mix-tips, 15 standard & 10 extra-fine intraoral tips

**Cartridge STACK: Dual-Cure/Automix**

- 3001430 Intro Kit / Shade White
  - 3001431 Intro Kit / Shade A3
- Contains one 50g cartridge, type-25 gun, 10 ACCOR® matrices, 4ml each IntegraBond & Bond Boost SE, 25 mix-tips, 25 intraoral tips

**Cartridge Refills**

- 3001432 Shade White
  - 3001433 Shade A3
- Contains one 50g cartridge, 10 ACCOR® matrices, 25 mix-tips, 25 intraoral tips

**Twist STACK: Auto-Cure/Syringe Hand-Mix**

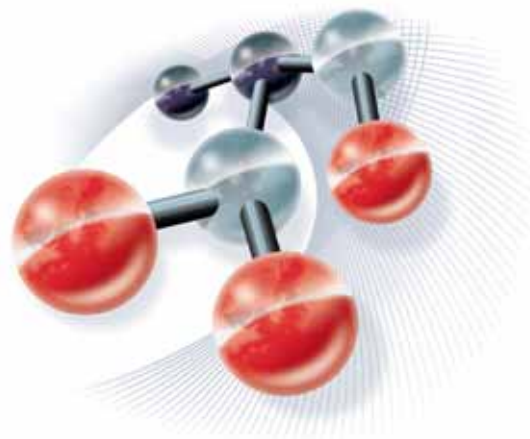
- 3001490 Shade White
  - 3001491 Shade A3
- Contains one 6g catalyst & base, mixing pads, 20 spatulas

**Accessories**

- 3001418 SyringeMix Mix-Tips & Intraoral Tips (35)
- 3001468 SyringeMix Extra-Fine Intraoral Tips (50)
- 3001416 Applicator Gun, Type-25
- 3001417 Cartridge Mix-Tips & Intraoral Tips (35)
- 9048081 ACCOR® Matrices, 50 multi-sized core matrix forms



See pages 143-145 for full listings of matrix bands and wedges, including ACCOR core matrix forms.

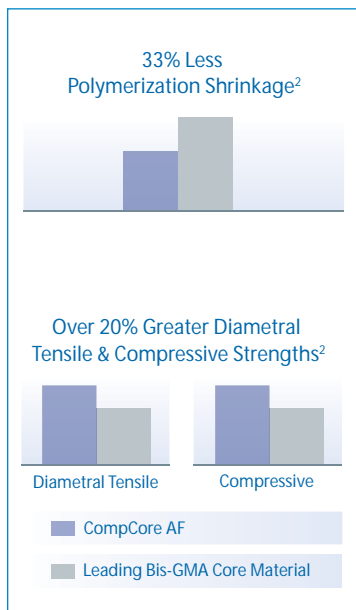


## CompCore™ AF Dual-Cure *Science that Works for You!*

CompCore AF with Hyperbranched Technology™, greater radiopacity and fluoride release!

### CompCore™

Smooth Flowing, Syringeable, Composite Core Build-up Material with Fluoride - Hand Mix



### Less shrinkage, greater marginal integrity

Hyperbranched Technology can be described as large spherical monomers containing a vast number of reactive groups. The availability and number of these reactive groups drive the curing process exponentially for more complete polymerization. This results in significantly less shrinkage and contraction stresses.<sup>1</sup> Resulting clinical benefits include high fracture toughness and greater protection against micro-leakage.

### Superior properties; stronger, durable cores

The spherical hyperbranched configuration interweaves the monomers and nano-fillers to form a dense cross-linked polymer matrix. The cross-linking effect produces a core with exceptional physical properties, including superior compressive strength and low solubility.<sup>1</sup>

### Ideal Handling - Saves Time

Premier® CompCore™, available in white and natural shades, is easily syringed, permitting precise placement without slumping and self-cures in only 3 minutes to save chair-time.

CompCore is radiopaque and contains fluoride. Its unique composite formulation provides outstanding compressive and tensile strength, yet easily trims like dentin. Create a strong, unitary core, bonding CompCore to tooth structure with Bond Boost SE™ and IntegraBond™.

### Outstanding Value - Saves Money Satisfaction Guaranteed!

3001402	Shade White (28g)
3001405	Shade Natural (28g)
3001401	Shade White (50g)
3001404	Shade Natural (50g)

### Physical Properties

Compressive Strength	250 MPa
Working Time	2 - 2.5 minutes
Auto-cure Set Time	4 - 4.5 minutes
Light-cure Set Time*	40 seconds

\*Check for hardness. Allow time for auto-cure in medium to large build-ups.

ACCOR® is a registered trademark of ACCOR Inc. / 1. Evaluation of Hyperbranched Polymers Effect on Dental Composite Properties, Lizenboim, K., Dodiuk-Kenig, H., Eppelbaum, I, Shenkar College for Engineering and Design, Ramat-Gan, Israel. / 2. Independent laboratory study from Creighton University, date on file. Dent. Research (1153,2002) / ©2007 Premier Dental Products Company.

CompCore™ AF (Advanced Formula) is CE marked. CompCore Tubs are not CE marked.

Restorative

**IntegraCem™**

Dual-cure Resin Cement



**Easy Technique**

IntegraCem™ low viscosity and thin film thickness allows excess cement to vent evenly for precise marginal fit. After a 10-sec. light-cure (halogen), you easily will remove cement flashing from seated crowns, bridges, inlays and onlays.

**Versatile**

Illustrated cards guide you through all step-by-step techniques, including PFM crown repair, cementation of Maryland bridges, posts, ortho brackets and bands.

**Ideal for "Bonded" Amalgam**

IntegraCem has superior bond-strength to all surfaces, especially metal. Formulated to chemically bond to fresh amalgam, IntegraCem will eliminate sensitivity<sup>3,4</sup> and permanently seal all restorative margins.

**Dual-Cure with Anaerobic Accelerator<sup>18</sup>**

Posts can be stabilized immediately by light-curing; IntegraCem's anaerobic accelerator guarantees complete curing even at the bottom of the post preparation.

3001410 Base & Catalyst- 4g each



**Bond Boost SE™**

Universal Self-etching  
Primer & Bond Enhancer



*"Pearls For Your Practice"*  
Dental Economics - May 2007



**Simplified technique**

No activator needed for self- or dual-cure composites.<sup>5</sup> No phosphoric-acid etching.

**Use with IntegraBond or your existing bonding agent.<sup>1</sup>**

**Strengthens core build-ups**

Dramatically improves bond strength to self- and dual-cure composites up to 160% even with other bonding agents.<sup>5</sup>

**Predictable and stronger dentin bonding**

Bond Boost SE contains a high level of adhesive monomer 4-META. As it etches and primes the dentin, Bond Boost SE carries the 4-META throughout the decalcified tooth structure. IntegraBond adhesives then co-polymerize with the 4-META, dramatically enhancing the strength of the hybrid zone and virtually eliminating any voids.

**Reduced post-operative sensitivity** by eliminating phosphoric acid etching and effectively sealing tubules with adhesive 4-META<sup>3,4</sup>.

3001424 Bond Boost SE Bottle (7ml)

**IntegraBond™**

Universal Adhesive System



**Over 10 years Proven Performance & Reliability<sup>6-17</sup>**

Offers outstanding shear bond strength to all popular light, dual- or auto-cure composites.

**Use IntegraBond after acid-etching or after Bond Boost SE.**

3001421 **IntegraBond Adhesive Kit**  
Contains: 4ml IntegraBond, 4ml Auto-Cure Activator, (2) 1.2ml Premier Etch Syringes, 50 Microbrushes, 20 Disposable Etch Tips, Mix Wells

3001411 **IntegraBond - 7ml**

3001412 **Auto-Cure Activator - 7ml**  
for use when light-curing is not possible

3001413 **IntegraBond - 4ml**

**Bond Boost SE and IntegraBond Universal Adhesive System with Enhanced Strength**



**1** Clean and dry freshly cut tooth structure.

**2** Brush on Bond Boost SE three times, wait 20 seconds, blow dry.

**3** Apply IntegraBond or your bonding agent<sup>1</sup> as directed, light-cure.

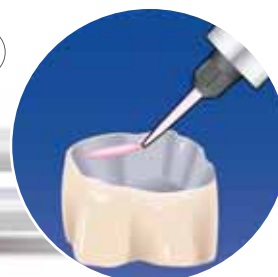
3. Hadi Z, Rosenstiel SF, Rashid RG. A comparison of post-treatment sensitivity using adhesive cavity liner vs conventional cavity varnish (abstract 1335). J Dent Res 1998;77(special issue A):272 / 4. Davis RD, Overton JD. Efficacy of bonded and nonbonded amalgam in the treatment of teeth with incomplete fractures. JADA 2000;131:469-78 / 5. Zalsman B, Valdman A, Lizenboim K, Suvorov A, Suvorov I, McHale WA, Dodiuk-Kenig H. Dual-Cure Core Compatibility to DBA using Self-Cured and Self-Etching Activators: IADR, 2006 program number 11116. / 6-17 Full bibliography available. / 18. I. Eppelbaum, H Dodiuk, S Kenig, B. Zalsman, A. Valdman, and R. Pilo. "The Role of an Anaerobic Accelerator in Dental Adhesives" J. Adhesion Sci. Technol., Vol 10, No 10, pp 10075-1087 (1996) <sup>1</sup> When bonding to self- or dual-cure composites, use only with bonding agents that are indicated for self- or dual-cure composites.

## NexTemp™

The Next Generation in Temporary Cement

*"Pearls For Your Practice "*  
Dental Economics - May 2006

*"Best Products of the Year"\**



**Greater Retention,  
Less Cement!**  
Just dispense a  
small bead of  
cement around  
the inside margin.

### Firm Retention/Easy Removal

4X greater retention than most zinc-oxide cements

**Eugenol-Free** - Non-irritating to soft tissue. Will not inhibit permanent cementation

### Fluoride Release

**Potassium Nitrate** - Known to reduce sensitivity and act as a sedative to the pulp

**Chlorhexidine** - A proven anti-bacterial agent

### Resin-Matrix Formulation

Good marginal seal with no wash-out

**Two-Stage Curing** - In approximately 2 minutes, initial gel-set stabilizes temporary, allowing easy removal of excess. Final set occurs one minute later.

**Automix Syringe** - Saves application time; guarantees consistent mix

**Neutral Shade** - Blends esthetically with temporary restoration / no show-through

3001470	<b>Bulk</b> - 4 Automix Syringes (5ml each)
3001471	<b>Standard</b> - 1 Automix Syringe (5ml) & 10 Mix Tips
3001451	<b>Automix Dual-barrel Syringe Tips</b> (25)



## Premier® Implant Cement™

Secure Retention & Retrieval for Implant Retained Crowns

*"Outstanding Products"\*\*\**



**Secure retention and retrievability in one unique cement!**

**High retention**- Long-term cementation

**Retrievability** - Off when you need it

**Low solubility** - Good marginal seal/ no washout

**Virtually no taste or odor** - Increased patient comfort

**Easy handling** - Two-stage cure features initial gel-phase in 2-2.5 minutes for easy removal of excess cement. Rigid final set ensures marginal seal and firm retention.

**Saves time** - Automatic, consistent mix and controlled dispensing

**Easy clean-up**

3001450 **Implant Cement**  
Contains: 1-5ml Automix Dual-barrel Syringe, 10 Mixing Tips and 1 Mixing Pad

3001451 **Automix Dual-barrel Syringe Tips** (25)



### Properties

Working Time	45-60 seconds
Gel-phase	2-2.5 minutes
Set Time	4-5 minutes

\*An independent non-profit dental education and product testing foundation, December 2006 & 2007

\*\*An independent non-profit dental education and product testing foundation, December 2004 & 2005

Restorative



*IntegraPost™ is easy to carry and place using the IntegraPost carrier.*



*CompCore™ is syringed through the patented Flow-Thru-Head® providing a void-less stress-free mechanical interlocking of post and core.*



*IntegraPost's rounded head eliminates stress points and the Flow-Thru-Head eliminates voids, ensuring complete post and core integration.*

**IntegraPost™**

Ultra-passive Integrating Core Retainer



**Safe and Secure**

The IntegraPost features an innovative round Flow-Thru-Head® and a parallel passive design to optimize the adhesive buffer zone, conserve tooth structure and minimize stress.<sup>19,20,21</sup>

**Balances Strength with Elasticity**

Made from bio-compatible titanium alloy, the IntegraPost is stronger than resin fiber yet more elastic than stainless steel.<sup>22</sup>

**Easy to Use**

Six post sizes and corresponding drills make post selection a simple process. IntegraPost heads are optimally sized in relation to shank length. The unique post-carrier instrument facilitates handling. Passive design minimizes stress points on root, reducing potential for root fracture. IntegraDrill is ideally sized in relation to post diameter, permitting 2.5X more cement into post space. This creates a "buffer zone" to absorb potentially stressful forces and the greater cement volume increases resistance to vertical dislodgement.<sup>23</sup>

**Innovative Design**

Midflange and shoulder are designed to dissipate stress away from canal. The safe, non-threaded parallel shank minimizes potential root fracture. Anti-rotational knurling locks into cement.

*In a 2006 ADA Professional Product Review on Endodontic Posts, which included metal, fiber and a ceramic post, **IntegraPost** received the **highest laboratory rating of 92%** with a buyer's satisfaction of **excellent!**<sup>24</sup>*



19-23 Full bibliography available.  
24. American Dental Association Professional Product Review™  
Publication by the ADA Council on Scientific Affairs, Vol. 1, Spring 2006. / IntegraPost designed by Endodontist, Dr. Phil Klein.

### IntegraPost™

Intro Kit



3001002 Intro Kit in non-spillable, autoclavable HotBox™  
 Contains: 20 posts,  
 (3) each #3, #5  
 (5) each #4, #4.5  
 (2) each #4.5L, #6,  
 (5) drills (assorted package),  
 x-ray overlay, IP Carrier  
 and IP Probe

3001001 Mini Intro Kit  
 Contains: 6 posts  
 (2) each #3, #4, #4.5, (3) drills -  
 (1) each #3, #4, #4.5, IP Carrier



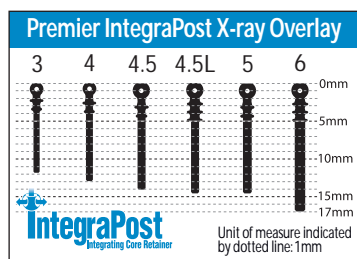
### IntegraPost™

Refills



Refills - (10 pack)

3001105	Size 3
3001110	Size 4
3001115	Size 4.5
3001120	Size 4.5L
3001125	Size 5
3001130	Size 6



IntegraDrills (3 pack)

3001205	Size 3 (yellow)
3001210	Size 4 (red)
3001215	Size 4.5 (purple)
3001225	Size 5 (blue)
3001230	Size 6 (green)

IntegraDrills (5 pack)

3001235 Assorted

Integra Instruments

3001301	IP Carrier
3001305	IP Probe



### IntegraPost™ HotBox™

Stainless Steel, Autoclavable Organizer



3001501 HotBox Organizer - Empty  
 (holds up to ten posts and  
 two drills of each size)



Restorative

**Premier® Etch**

37% Phosphoric Acid  
Dentin/Enamel Etch Gel



Premier® Etch contains phosphoric acid for etching tooth enamel and dentin when preparing surfaces for the application of composites.

3001422 37% Dentin/Enamel Etch Kit  
Contains: one 12g jumbo syringe, with luer lock adapter, ten empty 1.2ml syringes and (50) disposable applicator tips for the ten 1.2ml syringes

CE  
0510

**Porcelain Etchant**

9.6% Hydrofluoric Acid Gel



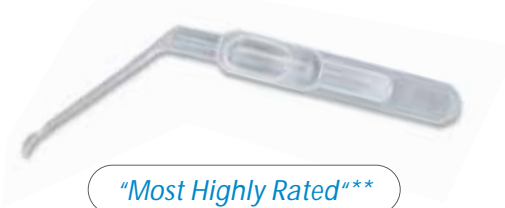
Yields superior retention. Each 0.2cc finger applicator unit is sufficient for etching two to four porcelain facings.

4009001 Porcelain Etchant - (22 units)

*MicroDose®  
"Outstanding Products"\**

**Porcelain Silane**

Advanced Silane Chemistry



Each 0.2cc finger applicator unit is sufficient for etching two to four facings, crowns or inlays. A clear liquid.

4009020 Porcelain Silane - (18 units)  
4009025 Porcelain Bonding Kit - 18 packs  
Contains: one unit each of Porcelain Etchant and Porcelain Silane

**38% Etchant - MicroDose®**

Fast Acting, Silica-Free  
Dentin/Enamel Etchant



*"Pearls For Your Practice"  
Dental Economics - March 2001*

15-20 second etch time. Each 0.2cc unit is sufficient for etching two to four teeth. Bright blue in color.

4009050 38% Etchant\* - MicroDose® Intro Kit  
Contains: (50) 0.2cc MicroDose pipettes and (2) autoclavable syringes  
4009051 Refill (50) 0.2cc MicroDose pipettes  
4009099 MicroDose Syringe Pack (3) autoclavable syringes

\*An independent non-profit dental education and product testing foundation, December 2002  
\*\*An independent non-profit dental education and product testing foundation, January 2001

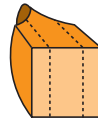
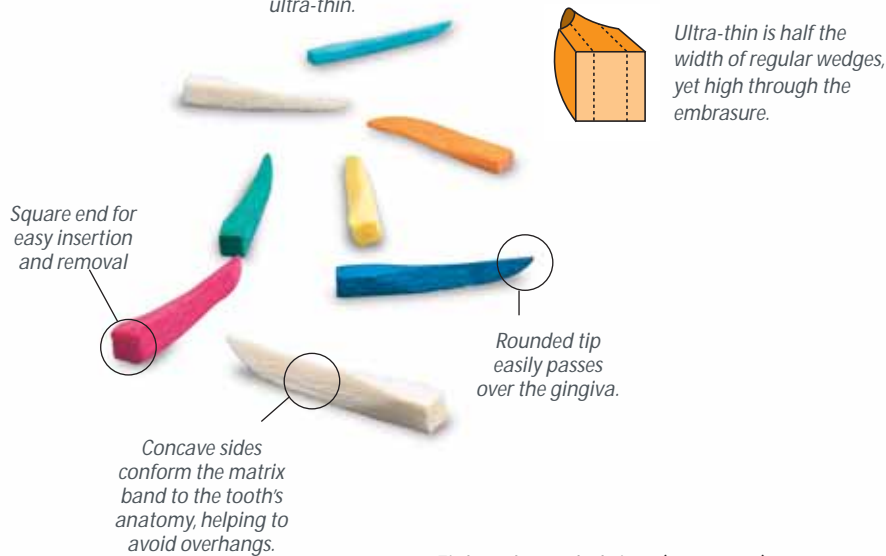
## Sycamore Wood Wedges

The Original Anatomically Carved

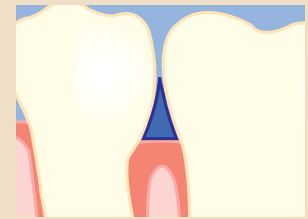
*"Most Highly Rated"\*\*\**

### Mini-wedge

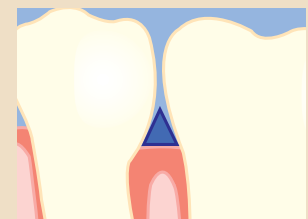
More narrow and shorter height than ultra-thin.



Ultra-thin is half the width of regular wedges, yet high through the embrasure.



Premier's anatomically shaped wedges fit interproximally to support your restoration and provide proper contour.



Other wedges fail to match the natural anatomy between teeth.

### Anatomically Carved for Adaptation

These wedges are slightly compressible, yet will not splinter, even in thin sections.

Teeth can be separated easily with a Premier Wedge to compensate for the thickness of the matrix band.

After the wedge is removed, the teeth return to their original position. A perfect contact point is restored.

Eight color-coded sizes (400 count)

9061109	Mini (Light Blue)
9061106	UT - Ultra Thin (Orange)
9061100	13XT - Extra Thin (Neutral)
9061101	13T (Green)
9061102	13 (Yellow)
9061103	15 (Blue)
9061104	16 (Red)
9061105	17 (Neutral)
9061108	Assorted (UT, 13, 13T & 15)

Number designates length of wedge in mm. (13=13mm)

## technique tip

Presoaking Wedges in water or Hemodent™ just prior to use causes them to swell while in place, creating greater wedge efficiency.



## Wood Wedge Organizer

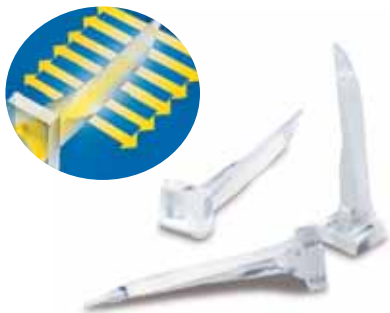
9061115	Six-compartment Wedge Organizer
---------	---------------------------------

## Multi-purpose Wedge Positioner

9065146	Multi-purpose Wedge Positioner
---------	--------------------------------

## Restorative

### Cure-Thru® Reflective Curing Wedges



Cure-Thru® Reflective Curing Wedges help eliminate marginal gaps, with only a slight change in technique. Since all light-cured composites shrink toward the light source, curing of Class II composite restorations first should be initiated from the gingival/proximal margin through Cure-Thru Wedges. The composite then will shrink toward the margin, ensuring a tight seal.

Unlike regular plastic wedges, Cure-Thru Reflective Curing Wedges have a plastic white interior that actually reflects 90% of the light at a 90° angle into the proximal surface for a thoroughly cured restoration without marginal gaps.

The Cure-Thru system contains transparent anatomically formed molar and premolar matrix bands that are thin, yet strong enough to pack against.

9061216 Intro. System  
Contains: (40) Ultra-Thin, (30) Small and (30) Medium Wedges, (30) each Premolar and Molar Bands

9061221 100 Small  
9061223 100 Medium  
9061225 100 Ultra-Thin

### Cure-Thru® Clear Cervical Matrices

Compress restorative material as you light-cure. Flexible to the exact contour of the tooth for dense restorations with excellent marginal integrity.

9061011 Assorted box of 275  
Contains: (50) Anterior/Premolar and Molar/Universal, (35) all other shapes, positioning instrument, gingival retraction instrument

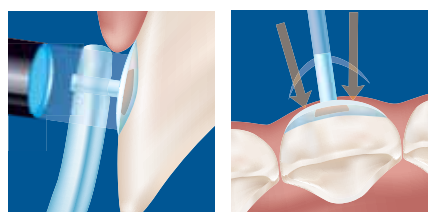
Available in boxes of 150

9061012 719CT  
9061013 720CT  
9061014 721CT  
9061015 722CT  
9061016 723CT  
9061017 Anterior/Premolar  
9061018 Molar/Universal  
9061340 Positioning Instrument (clear) double-ended, autoclavable

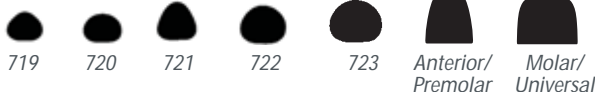
*"Pearls For Your Practice"*  
Dental Economics - March 2000



**Cure-Thru**



Actual Size



### Cure-Shield Hand-held Visible Light Shield

Premier Cure-Shield effectively blocks out potentially harmful ultra-violet and blue light at wave-lengths shorter than 525 nanometers which, after prolonged exposure, may cause photochemical burn of the retina.

- Protects the entire staff
- Can be held by the assistant, the patient or the free hand of the operator
- Is not cumbersome or expensive like eye glasses
- Does not restrict your visibility

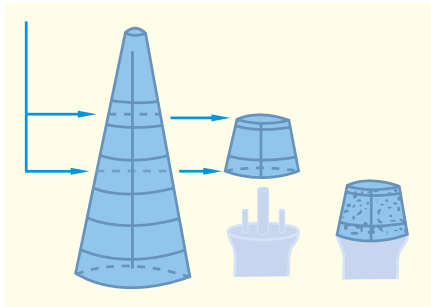


9006166 Pack of three

Pat.Nos.Des.294,639; 4,640,685; 4,737,104



**ACCOR®**  
Multi-sized Matrices  
for Core Build-up



**Easy to use**

One cut across the Premier ACCOR® Matrix produces basic gingival contour. No lubrication required, nearly impossible to overseat.

**Versatile**

Can be used on anterior and posterior teeth, with glass ionomers, composite, pattern acrylic or softened wax.

**Disposable**

Eliminates cross-contamination possible with trial-and-error fitting of individually sized forms.

9048081 50 Matrices

ACCOR® is a registered trademark of ACCOR Inc.



**Cure-Thru® Squeeze Matrices**  
Retainerless Matrix



When the self-contained metal ring is squeezed, the clear anatomical matrix adapts itself to the anatomy of the tooth. Visibility is excellent and there is no need for matrix retainers which are cumbersome when completing light-cured procedures. Curing then can be initiated via the Cure-Thru reflective curing wedge. Cure-Thru Squeeze Matrices are 0.075mm thin.

9061341 Intro. System

Contains: (25) Premolar, (25) Molar, (20) Ultra-Thin, (15) Small, (15) Medium, Cure-Thru Reflective Wedges, Cure-Thru Cervical Matrices and Sycamore Wedges

9061345 50 Premolar Bands

9061349 50 Molar Bands

**Cure-Thru® Anatomical Matrix Bands**

Mylar - 0.075mm thick



These transparent anatomically formed molar and premolar matrix bands are thin, yet strong enough to pack against.

9061231 100 Premolar Bands

9061233 100 Molar Bands

**Pre-contoured Metal Bands**

0.035mm thick



Made of high tensile strength stainless steel, these contoured metal bands (0.035mm thick) add great anatomy to restorations. Finished edges ensure patient comfort.

9061070 30 Pre-contoured Metal Bands

**Stop Strips**

Mylar Anterior Bands  
with Integrated Stopper

Stop Strips take you from three-handed dentistry to two. You can light-cure Class III and IV restorations with ease.



Unique integrated stopper secures the matrix band between adjacent teeth.



Pull the band taut; you have improved access for light-curing.

9061370 Assorted, 8mm & 10mm (75 each)

9061375 Straight, 10mm (100) (blue)

9061380 Straight, 8mm (100) (red)

*"Pearls For Your Practice"*  
Dental Economics, April 2001